

FB21

Compact And Reliable Thermal Camera For Observing In Total Darkness And Smoke.



High Image Quality

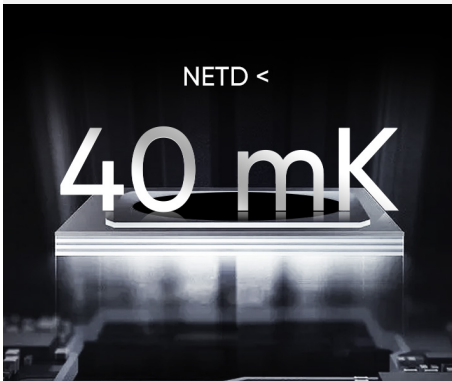
Features a highly sensitive (NETD < 40 mK) VOx detector and optimized image enhancement algorithms to provide clear thermal images.

3.2" Color LCD

View the details of your images on the large, class-leading LCD screen

Rugged & Durable Design

IP65 rated for protection against water and dust. Featuring 2-meter (6.56ft) drop protection, suitable for harsh environment.



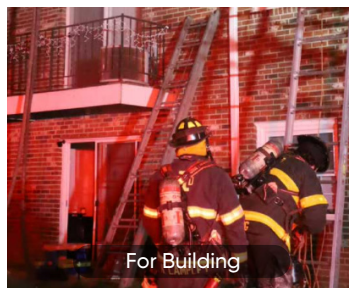
For Observing In Total Darkness And Smoke



For Smoke Systems



For Fire Rescue



For Building

Working Temperature Range:
Up to 10 minutes for ambient temperature **-10°C TO 90°C**
(14°F TO 194°F)

Up to 2 minutes for ambient temperature **-10°C to 115°C**
(14°F to 239°F)

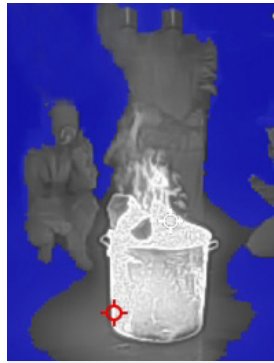
8 Color Palettes Give Different Image Display Options



Fire Detection



Rescue



Cold Area



Building



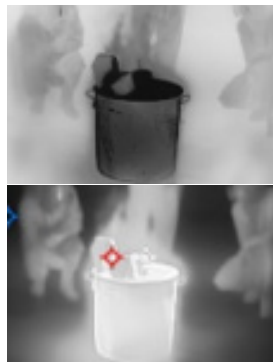
Hot Area

For scenes with higher background temps where open flames are present, particularly in structural fires.

For use with lower temperature situations, such as initial rescue efforts after traffic accidents, searches in wooded areas, etc.



Basic



Black & White

For initial fire attack and rescue operations; colors represent temperature.

Same representations of temperature as the Basic mode, but in grayscale.

What's In The Box



- Thermal Camera with Wrist Strap
- Power Supply
- International Use Plugs (US/EU/UK/AU/CN) for Power Supply
- USB 2.0 A to USB Type-C Cable
- Calibration Certificate
- Quick Start Guide

Basic Parameters		FB21
Infrared Image	IR Resolution	256 × 192 (49,152 pixels)
	NETD	< 40 mK (@ 25 °C, F#=1.0)
	Image Frequency	25 Hz
	Field of View (FOV)	37.2° × 50.0°
	Min. Focusing Distance	0.3 m (0.98 ft)
	Focus Mode	Focus Free
Image Display	Visual Camera	1600 × 1200 (2 MP)
	Display	240 × 320 Resolution, 3.2" LCD Screen
	Color Palettes	Basic, Black Hot, White Hot, Fire Detection, Rescue, Hot Area, Cold Area, Building
Measurement and Analysis	Object Temperature Range	-20 °C to 550 °C (-4°F to 1022°F)
	Accuracy	Max. (± 2°C/3.6°F, ± 2%), for ambient temperature -20°C to 50°C (-4°F to 122°F) and object temperature above 0°C (32°F)
General	LED Light	Yes
	Battery Type	Rechargeable Li-ion battery
	Protection Level	IP65
	Drop Test Height	2 m (6.56 ft)
	Working Temperature Range	Up to 10 minutes for ambient temperature -10°C to 90°C (14°F to 194°F); up to 2 minutes for ambient temperature -10°C to 115°C (14°F to 239°F)
	Weight	Approx. 380 g (0.84 lb)

